

## National Concert Hall Visual Guide,

### Special Schools Concert 28<sup>th</sup> January, The John Field Room

This is a visual guide for people coming to the National Concert Hall (NCH). It will tell you how to get to the NCH and what you can find. This is a working document, so please let us know if there is something you would like us to include.

If any of this is confusing or you want us to include additional information in this document, you can email our box office team at [info@nch.ie](mailto:info@nch.ie), and they can answer any questions you have about the building.

1. [Getting here](#)
2. [When you arrive](#)
3. [Bathrooms](#)
4. [The John Field Room](#)
5. [Special Schools Concert](#)



Welcome to the National Concert Hall. Lots of different music events happen here.

There are 5 steps up, and a ramp to access the building.

## Getting Here

We are located on Earlsfort Terrace in the heart of Dublin's City Centre. There are many convenient ways to get here throughout the week and over the weekend.

[View our Location on Google Maps](#)

Dublin Bus	<p><a href="#">Number 44</a> (from DCU to Enniskerry); and <a href="#">number 61</a> (from Eden Quay to Whitechurch) all stop on Earlsfort Terrace, directly outside the NCH.</p> <p><a href="#">Number 46a</a> (From Phoenix Park to Dun Laoghaire) stops on Leeson Street, beside Earlsfort Terrace.</p>
Luas	Take the Luas to Harcourt, and make your way to Earlsfort Terrace via Hatch Street.
The Scenic Route	If you're coming to an afternoon concert, popping into us for lunch or just visiting during the day, why not take a stroll through the beautiful Iveagh Gardens, located just off Harcourt Street. You can access the NCH through an exit just a few minutes from the Clonmel Street entrance. The exit is located beside the statue of tenor John McCormack.
DART	Our nearest DART station is Pearse Station.

## When you arrive:



Come through our front doors into our main foyer space.



Just inside the main doors. There might be lots of people and lots of noise in the foyer.



When you turn to your right you will see our Café.

You can buy food and drinks here.  
There might be lots of people and lots of noise.



If you look to your left, you will see our box office.

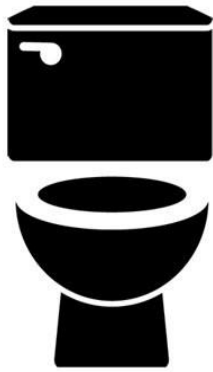
The people here will print off your tickets if you don't have them on your phone/tablet, and also can tell you about any upcoming concerts you are interested in or would like to book for.



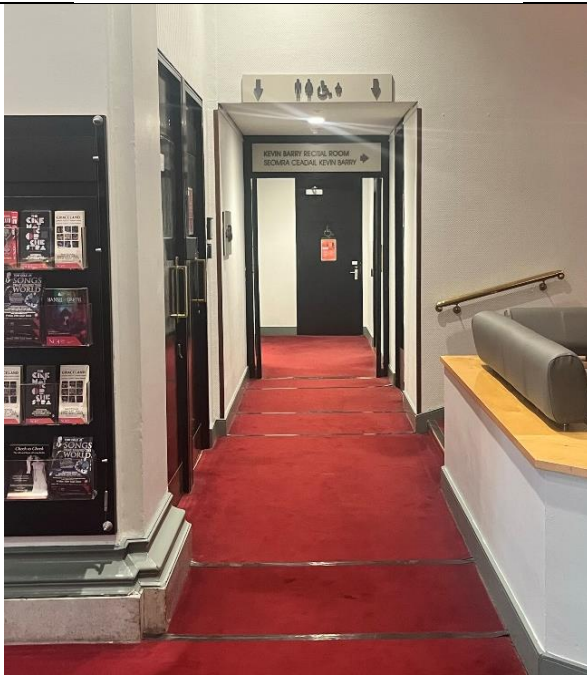
Our staff have a few different uniforms, and sometimes they wear masks.

If you have any questions, please find anybody in one of these uniforms and they will help you.

## Bathrooms:



On the ground floor there are men's, women's and gender-neutral accessible toilets.

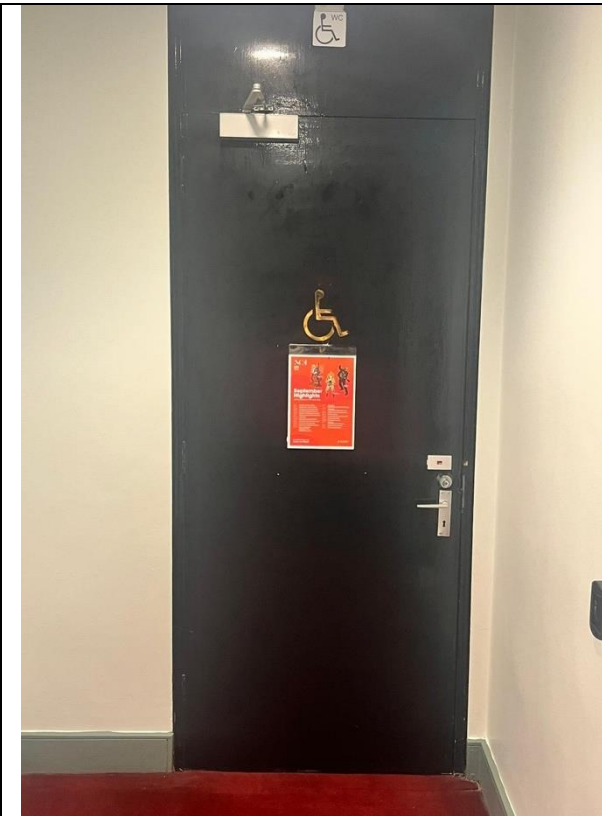


These toilets can be found beside the box office.

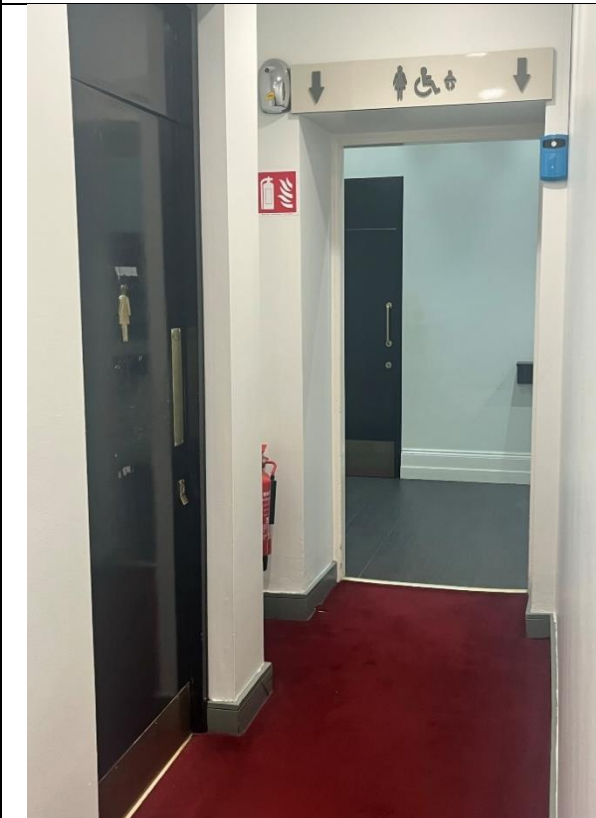


This is the men's toilets on the ground floor.





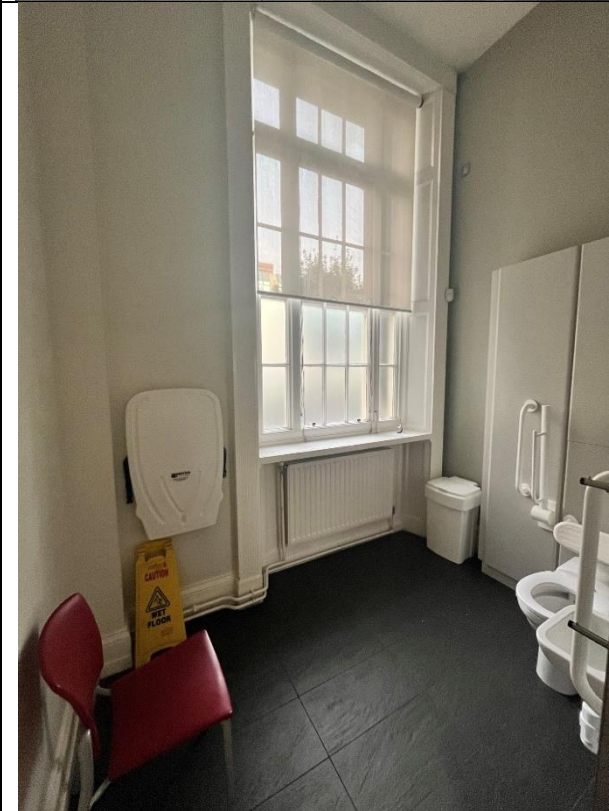
This is the accessible toilet by the men's toilet



This is the women's toilet – there is a second women's bathroom at the back of the photograph.



There is also a second universal access bathroom in this area.



This is the larger universal access bathroom.

## The John Field Room:



The concert will take place in the **John Field Room** on the ground floor.

These are the doors to the John Field Room.

There might be lots of people in here and lots of noise before the concert starts.



The room will be set up with chairs. There will be some space for wheelchair users and wide aisles to move through.

There will be a small stage for the musicians in the room with some chairs, microphones, instruments, speakers and music stands.



There will be coloured blankets and cushions laid out in front of the stage, and you can sit on these blankets/cushions, or on chairs if you prefer.

## Special Schools Concert



At the start of the concert, there will be a short announcement and then the musicians will come onto the stage.

There will be 4 musicians on stage. The instruments you might see/hear include a drumkit, a guitar, a double bass and a singer with a microphone.



This is Ríona.

Ríona will be singing in today's concert.

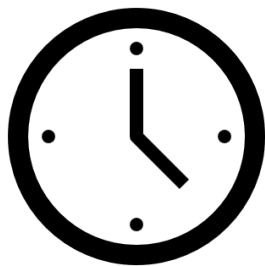
She will be on stage and will also walk amongst the audience with her microphone. She might ask you your name or ask you to help her to sing a song, but only if you want to!



Ríona will also introduce the musicians, songs, and talk to the audience a little bit.

She will invite you to sing along with her.

You can move and dance if you like.



The concert will begin at 11am.

The concert will be about 50 minutes long.





Ríona has some items to help her lead her band.

She might have a long stick with a ribbon on it or she might have a colourful ball that gets bigger and smaller.



Ríona might invite you to have a turn with the ball.



Sometimes we hand out little instruments to play along with the band like coloured egg shakers, tambourines and jingling bells for anybody who wants one.

Sometimes this can get a bit loud.